



Installation Guidelines

Below are step by step instructions for installing the ExpressMaintenance software and the required Microsoft SQL Server database engine. These instructions also apply to existing customers wishing to transfer the application and data from one server to another. Where applicable, the difference is noted. Though this guide appears lengthy, the steps below only take a few minutes.

Note: These steps are to be performed using a **login with full administrative rights**. They should be done at the server computer or at a standalone computer functioning as its own server. We recommend carefully following each step below checking them off as they are completed. Should you need to email our support department (support@mas.systems), please be specific about which steps you have completed and where you are having trouble as well as any error messages you receive.

SQL Server

Installing the Database Engine – Microsoft SQL Server Express

ExpressMaintenance uses the very powerful and robust Microsoft SQL Server for database storage and retrieval. ExpressMaintenance will work with all versions of MS SQL Server. Below are the recommended versions of SQL Server that may be used. The download links are for the express (free) edition of Microsoft SQL Server.

__1. If you do not already have SQL Server installed, you will need to download and install one of the versions listed below. We recommend using SQL Server 2012 or higher. If you already have an existing copy of SQL Server installed on your server / computer, you do not need to install Microsoft SQL Server and you should proceed to step 3 below.

Select Database Engine Version To Download	Download Link
MS SQL Server 2012 Express Install 32 or 64 Bit	Microsoft SQL 2012
MS SQL Server 2014 Express Install 32 or 64 Bit	Microsoft SQL 2014
MS SQL Server 2016 Express Install 32 or 64 Bit	Microsoft SQL 2016
MS SQL Server 2017 Express Install 32 or 64 Bit	Microsoft SQL 2017



MAS | Manufacturing Asset Solutions

Solutions that provide a quantifiable return on investment

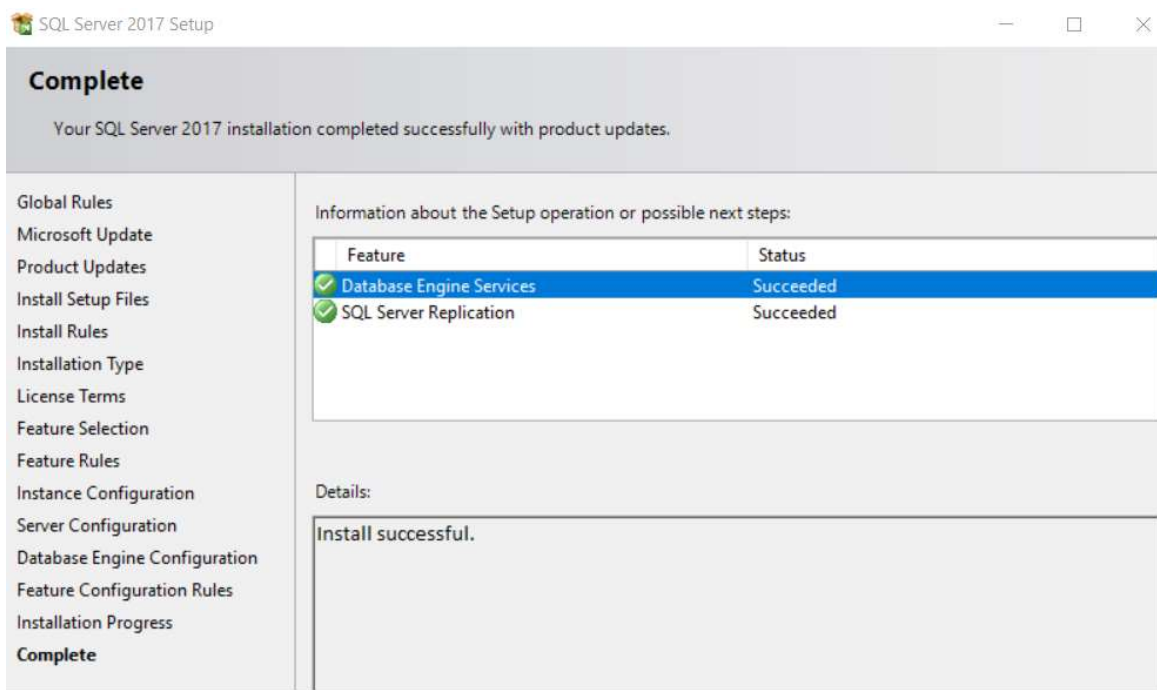
__ 2. Download and run the desired MS SQL Server installation file from your hard drive at the server. Follow the installation dialogs and take the **default options with three exceptions noted below**. We recommend you make these changes during the installation of SQL Server Express. The installation process will take a few minutes.

Once the installation process has completed, you might have to click the Customize button (shown below) to access the three configuration screens noted in a, b and c below.



Figure 1 above - from SQL Server Express 2017 install

Figure 2 below - Customize Screen from SQL Server Express 2017 install



__ a. Instance Configuration: We recommend you change the default setting for instances. You must specifically **select the option that reads "Default Instance."** This will allow the SQL Server to be referenced as the same name as the computer name on which it is installed. If you must use



MAS | Manufacturing Asset Solutions

Solutions that provide a quantifiable return on investment

instances, be sure to change or note the instance name (default is \SQLExpress) you select as you will need to reference it as your SQL Server database engine.

__ b. Server Configuration: You will be prompted for the accounts and way you want the SQL Server services to startup. Be sure to **select "Automatic" startup for the SQL Server service and select Automatic for the SQL Server Browser service**. The SQL Server Agent service is not used and does not matter for our software.

__ c. Database Engine Configuration (Authentication Method): We strongly recommend you **select "Mixed Mode Authentication" (SQL & Windows)** and **enter a password for the 'sa' login** account. Be sure to **note the password you select for the 'sa' login to the SQL Server**. Mixed mode authentication will allow the program to connect to the SQL Server using Windows or SQL authentication. If you do not select Windows and SQL authentication (mixed mode), your workstations will not likely be able to connect to the SQL Server.

Configuring and Starting SQL Server Database Engine

__ 3. You will now need to configure SQL Server and restart the SQL Server service. **This only takes a few seconds but is very important**. To configure SQL Server, go to the **Windows Start button and go to All Programs / Microsoft SQL Server / Configuration Tools** and run SQL Server Configuration Manager. Once **in the configuration manager**, click on **SQL Server Services** in the left panel and **make sure SQL Server Service and Browser service are running** in the right panel -see *Figure 3 below*.

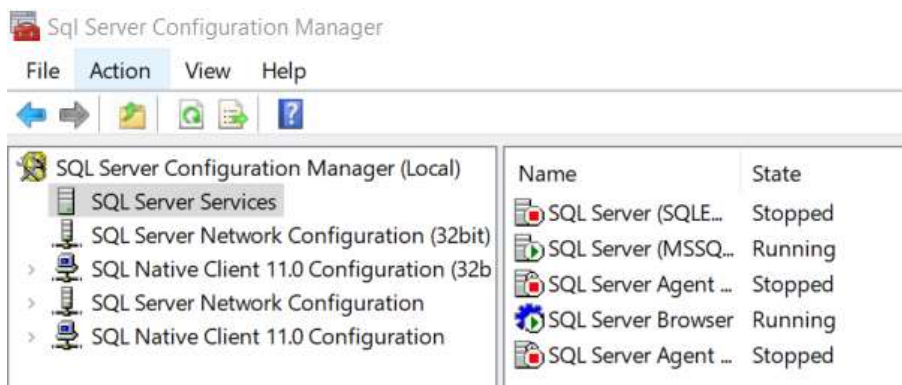


Figure 3 -SQL Server Config Manager



Equipment and Tooling Management



Manufacturing Support Systems



People & Process Management

Online:

MAS | website
<https://mas.systems>
MAS | manufacturing user group
<https://community.mas.systems>

Contact:

Direct +831 275 0692
info@mas.systems

Locations:

Los Angeles, CA Dallas Ft. Worth, TX
Monterey, CA Columbus, OH
Tucson, AZ Nashville, TN
Santa Fe, NM Upstate, NY



MAS | Manufacturing Asset Solutions

Solutions that provide a quantifiable return on investment

4. While in the Configuration Manager, you also need to turn on certain protocols which will enable your workstations to communicate with the SQL Server. In the left panel, open each subsection and note if there is a subsection for Protocols. At each Protocols section, you must enable Shared Memory, TCP/IP and Named Pipes -see figure 4 below. To enable a protocol that is disabled, right click on it and left click on Enable.

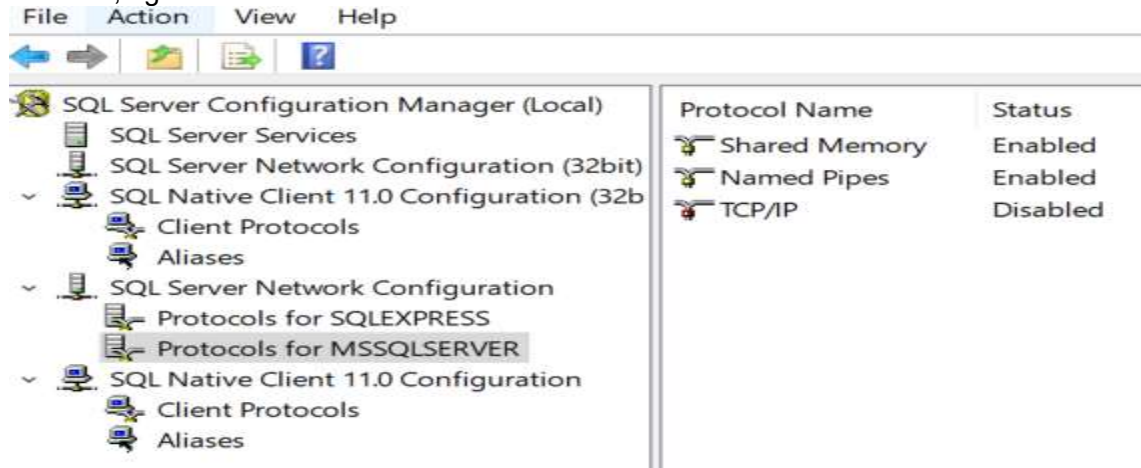


Figure 4 - Enabling Protocols

5. Once you have enabled the above noted protocols in each subsection, left click on the SQL Server Services in the left panel and then right click on the SQL Server in the right panel. Left click on the option to Restart the SQL Server and wait for it to restart. Once the SQL Server is restarted and running, exit the SQL Configuration Manager.

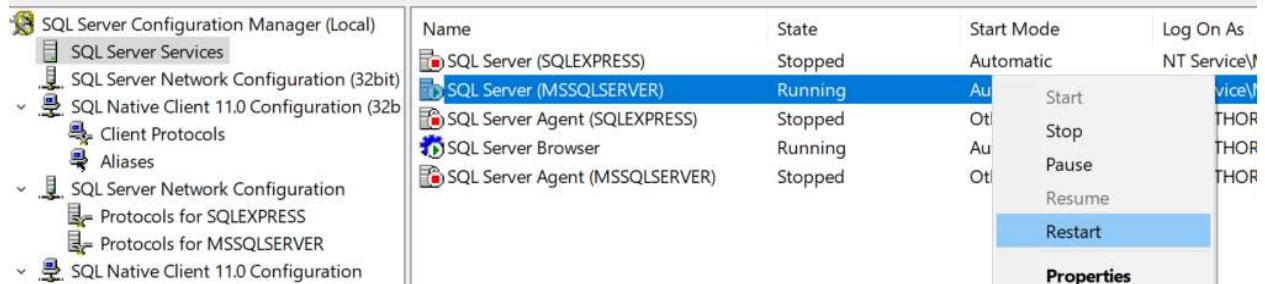


Figure 5 - Restarting SQL Server



Equipment and Tooling Management



Manufacturing Support Systems



People & Process Management

Online:

MAS | website
<https://mas.systems>
MAS | manufacturing user group
<https://community.mas.systems>

Contact:

Direct +831 275 0692
info@mas.systems



Locations:

Los Angeles, CA Dallas Ft. Worth, TX
Monterey, CA Columbus, OH
Tucson, AZ Nashville, TN
Santa Fe, NM Upstate, NY



Express Maintenance

Installing the Application – ExpressMaintenance

__ 1. Download the ExpressMaintenance- follow the link to the [Trial Download Page](#) and click the  button and save the install file to the hard drive on the computer where you have installed the SQL Server database engine. You may also wish to download and install ExpressRequest . Be sure to note the folder location where you place these files.

Note: Even if you are transferring to a new server and are running an older version, you need to download the latest release of the software. When you first run ExpressMaintenance, your data will be upgraded to the current version.

__ 2. Once you have downloaded the ExpressMaintenance install file (EMInstall.exe), run the installation file and follow the prompts. We recommend you accept the defaults including the default installation folder. If you choose to change the installation folder, be sure to note the location you specify. If you have purchased ExpressRequest, you will want to run that installation program as well.

Creating the ExpressMaintenance Database

__ 3. Once ExpressMaintenance is installed, run the program at the server computer. ExpressMaintenance will indicate that the SQL database could not be found and prompt to run the Create Database Utility. Select Yes – Run the database creation application now.

Note: If you have existing ExpressMaintenance data from a prior server, you should copy your original data and log files from your old server and paste them in the ExpressMaintenance installation folder (default is C:\ExpressTech) to overwrite the model files. This will allow you to setup the new database using your existing data. If this is a new installation without any prior ExpressMaintenance data, this note does not apply.

__ 4. The Create Database Utility will appear as shown below.

Equipment and
Tooling ManagementManufacturing
Support SystemsPeople & Process
Management

Online:

MAS | website
<https://mas.systems>
MAS | manufacturing user group
<https://community.mas.systems>

Contact:

 Direct +831 275 0692
 info@mas.systems

Locations:

Los Angeles, CA Dallas Ft. Worth, TX
Monterey, CA Columbus, OH
Tucson, AZ Nashville, TN
Santa Fe, NM Upstate, NY

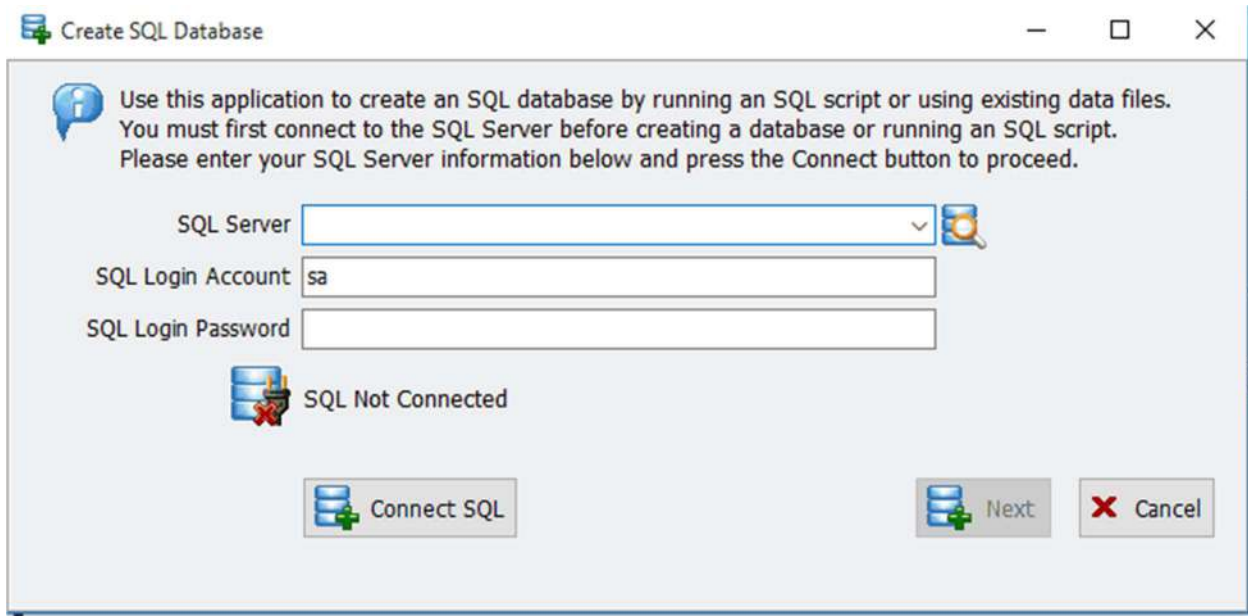


Figure 6 - Database Creation Utility

___ 5. To proceed with the creation of the ExpressMaintenance database, **complete the fields as shown above**. Enter the name of your SQL Server name or search for it by clicking on the search icon. Enter the 'sa' password you entered when installing SQL Server. Then **click the Connect SQL button to make the connection to the SQL Server**. After the connection is made, click the Next button to proceed.

___ 6. The next screen will appear giving you the option to select how you would like to create the new database. If this is **a new installation with a new database, select the 1st option**, 'Create an SQL database and all tables by running an SQL script file'. If you are using existing data such as moving to a new server, select the 2nd option, 'Create and SQL database using existing data and log files'. After selecting the method, click the Next button

___ 7. Once you have selected the method and click Next, the screen will be different depending on the selection made. **If creating from a script file, you will be prompted for the script file name. This should be entered for you**. You will also be prompted for the folder location where you want the data and log files to reside. **If you are using existing data and log files, you will be prompted for the location of these files.**



Equipment and
Tooling Management



Manufacturing
Support Systems



People & Process
Management

Online:

MAS | website
<https://mas.systems>
MAS | manufacturing user group
<https://community.mas.systems>

Contact:

Direct +831 275 0692
info@mas.systems

Locations:

Los Angeles, CA Dallas Ft. Worth, TX
Monterey, CA Columbus, OH
Tucson, AZ Nashville, TN
Santa Fe, NM Upstate, NY



Note: If you are using data and log files that you previously had on another computer, you will need to select the correct data and log files from the folder where the files have been placed on the new server. If you are transferring data but only have a backup file (.bak) rather than the actual data and log files, you should create a database using the models as if this were a new installation. Once the database is created, you can then use the Restore option under Administration to restore your backup data over the new database.

__ 8. Once you have completed your selections, click the Create Database Now button.

__ 9. Once the database is created, click the Close button to exit the Database Creation Application.

__ 10. Now you are ready to run ExpressMaintenance. Now run ExpressMaintenance again and it should connect without errors. **If this is a new installation, you will see the Registration Screen.** Email the serial number and your company information to support@mas.systems We will verify your purchase and provide a permanent registration code.

If you purchased a multiple user license to ExpressMaintenance, you are now ready to setup shortcuts for workstations to access the program. For more information on setting up workstation shortcuts – see [WkStations_DB_x_Instructions](#)

Troubleshooting

If the program fails to create the database, you should check the following items:

1. Make sure you enter the correct SQL Server Name. By default, the SQL Server name it is the Computer Name or ComputerName\SQLEXPRESS (if using instances).
2. Make sure you are using the correct 'sa' login and password that was assigned during installation of the SQL Server.
3. Make sure you started the SQL Server service as outlined in steps 4 – 7 above.
4. If using SQL 2005, 2008 or later, make sure you have configured SQL Server as outlined in step 5 above.



Equipment and
Tooling Management



Manufacturing
Support Systems



People & Process
Management

Online:

MAS | website
<https://mas.systems>
MAS | manufacturing user group
<https://community.mas.systems>

Contact:

Direct +831 275 0692
info@mas.systems

Locations:

Los Angeles, CA Dallas Ft. Worth, TX
Monterey, CA Columbus, OH
Tucson, AZ Nashville, TN
Santa Fe, NM Upstate, NY



If you are able to run ExpressMaintenance at the server but the workstations fail to connect to the SQL Server database, you should check the following items:

1. Make sure users have permission to read the ExpressMaintenance.ini file.
2. Make sure you have the SQL Server set to Windows and SQL Authentication (mixed mode).
3. If using SQL 2005, 2008 or later, make sure you have configured the SQL Server as outlined in steps 5 – 7 above.
4. ExpressMaintenance connects to the SQL Server using the SQL login account of 'etuser'. When the database is created, ExpressMaintenance will automatically setup this login for you. However, if you need to setup the 'etuser' login manually, step by step instructions are available – [see Create_EtUser](#)



Equipment and Tooling Management



Manufacturing Support Systems



People & Process Management

Online:

MAS | website
<https://mas.systems>
 MAS | manufacturing user group
<https://community.mas.systems>

Contact:

Direct +831 275 0692
 info@mas.systems

Locations:

Los Angeles, CA	Dallas Ft. Worth, TX
Monterey, CA	Columbus, OH
Tucson, AZ	Nashville, TN
Santa Fe, NM	Upstate, NY