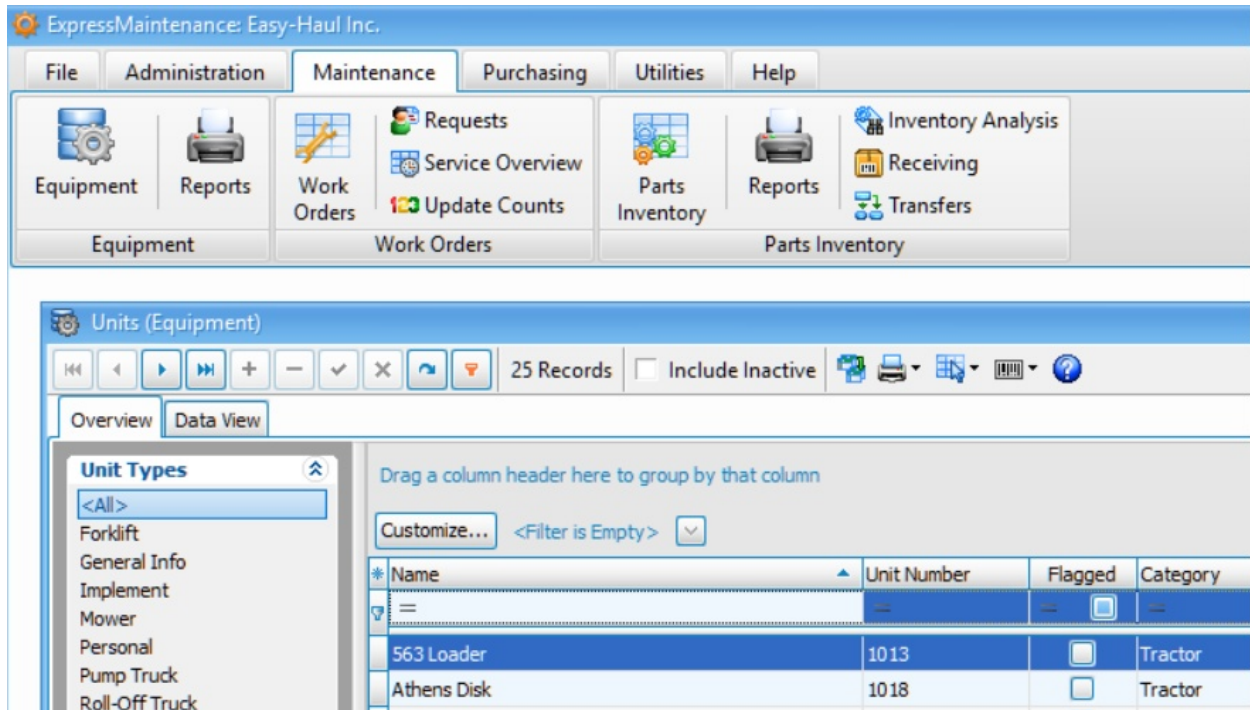


# ExpressMaintenance Release Notes

**ExpressMaintenance Release 9** introduces a wealth exciting features. It includes many enhancements to the overall interface as well as powerful new features and options to make your maintenance management even easier. The following is a general summary of the many changes in version 9.1. Be sure to print and follow the [Version 9 Update Guidelines \(important\)](#). Also, see [Version 9 – Searching](#) and [Version 9 – What’s New?](#)



## Release 9.5.2.1

General – Incorporates new version and features of Report Builder.

General – Imports 5 new reports used by the Mobile App.

General – New fields to accommodate the new Mobile App settings and licensing.

General – Update includes the new Mobile App Server software for communicating with mobile devices.

Administration / Defaults / Configuration – New Mobile App Settings section and fields for Mobile App Setup.

Maintenance / Work Orders – Corrected issue of one of the user defined service fields having the incorrect column heading.

Maintenance / Units – Corrected issue of older attachment hyperlinks not working.

ExpressRequest – Added ability to view notes of a work order services when viewing assigned work order.

### **Release 9.5.2.1**

General – Corrected performance issue when querying and updating data.

General – Improved Hyperlink dialog interface in notes editor throughout program.

General – Added additional indexes on certain tables to improve performance especially on Requests table.

Parts / Receiving – Adjusted to prompt for new part cost even if the current cost is set to 0.

ExpressRequest – Adjusted to allow selection to View All Request (other user's requests) based on settings in ExpressMaintenance / Administration / Configuration / ExpressRequest.

### **Release 9.5.1.1**

Administration / Configuration / Performance Settings – Added option to turn On / Off the SQL Connection Monitor for all users. The connection monitor will ping the SQL Server every 60 seconds to verify connection. We recommend you set this option to On.

Administration / Configuration / Performance Settings – Added option to set the number of SQL Connection Retry Attempts for all users. When the connection to the SQL Server is lost, the program will attempt to reconnect the specified number of times before terminating. We recommend you set this option to 5 to 10 retry attempts.

Administration – Added button 'SQL Monitor' option to set the status of SQL Connection Monitor On / Off for the current session of the program.

ExpressMaintenance & ExpressRequest – Added code to ping SQL Server every 60 seconds to confirm connection if SQL Connection Monitor is turned on.

ExpressMaintenance & ExpressRequest – Added code to terminate program and write status to log 'Connection.Log' file when connection to SQL Server is lost and specified number of reconnect attempts have been met.

ExpressMaintenance & ExpressRequest – All SQL Server connection errors are now written to the ConnectionErrors.Log file in the folder with the program file Maintenance.exe.

### **Release 9.4.4.1**

Admin / Configuration / Purchase Orders – Added field setting to turn off ability of users to edit the PO Number in the PO screen.

Parts / Receiving – Corrected issue of error message when importing a non-numeric PO Number.

Maintenance / Work Orders – Corrected issue of program hanging when creating a work order from a Request and invalid required fields was not populated.

Maintenance / Work Orders – Adjusted to allow selection of All or <All> in search criteria.

Maintenance / Units – Added the ability to view / enter time in the Current Count and Installed date time fields.

Purchase Orders / Emailing – Removed the debug message being shown when emailing a PO or RFQ.

Purchase Orders – Improved functionality of the procedure performed when Void button is clicked.

Admin / Employees / Activity Log – Corrected issue of search date range not working correctly.

General – Corrected problem that was preventing international dates to properly verifying registration code.

General – Adjusted program throughout to properly reflect ‘Deleted’ in user activity log when user deletes a record. In some cases it was logging as ‘Edited’ rather than ‘Deleted’.

#### **Release 9.4.2.4**

Admin / Employees – Added Access Setting for Work Orders Group to limit employee to viewing and editing only work orders of their work group.

Maintenance / Work Orders – Added functionality to limit employees to their work group if applicable per employee Access Settings.

Parts / Receiving – Re implemented code to warn user if duplicate vendor records with the same invoice number are entered.

Admin / Services – Corrected issue of Labor Estimate field being formatted as currency when it should be number.

Parts Receiving / Importing Receiving – Corrected issue of part record number not being determined and thus records not being imported.

#### **Release 9.4.2.1**

Maintenance / Work Order Overview – Added features to allow completion of all flagged work orders at once.

Maintenance / Work Order Overview – Added feature to allow right click and immediate completion of selected work order.

In order to use the above features, you must turn on Work Order Overview editing under Admin / Configuration / Scheduling.

#### **Release 9.4.1.8**

Maintenance / Units – Added button for new report of Unit Attachments With Services. [Download report here.](#)

Maintenance / Parts Analysis – Added three new columns in grid to reflect total value of parts based on quantity and Current Cost, Average Cost and Billing Price.

Notes Utility – Adjustment to Notes Utility to correct any issues with text only version of Request notes.

#### **Release 9.4.1.5**

Purchase Orders – Corrected issue of email body not being populated with body from configuration.

Work Orders – Corrected issue of email body not being populated with body from configuration.

#### **Release 9.4.1.4**

Parts / Reordering – Corrected issue of not being able to create PO for all parts of the selected vendor.

#### **Release 9.4.1.3**

Maintenance / Work Orders / Service Overview – Added Unit Make, Model and Criticality fields to be available in grid.

Maintenance / Work Orders / Service Overview – Added the ability to search by Unit Criticality.

#### **Release 9.4.1.1**

Maintenance / Service Overview – Corrected issue of notes not being visible in editor.

Maintenance / Work Orders – Corrected issue of notes not being visible in the overview grid.

Maintenance / Work Orders – Corrected issue of not being able to search on notes in the overview grid.

Maintenance / Work Orders – Corrected issue of search calendar not being visible initially.

Maintenance / Work Orders – Corrected issue of printing duplicate service notes when sending directly to printer without previewing first.

#### **Release 9.3.9.4 Revision**

Maintenance / Work Orders – Corrected issue of grid settings not being applied.

Admin / Rebuild Views – Adjusted to include interval data from the unit / services.

#### **Release 9.3.9.2 Revisions**

Maintenance / Update Counts – Improved interface and adjustment to allow for Microsoft ODBC changes.

Maintenance / Work Orders – Adjustments to prevent scrolling when record is in edit mode.

Purchase Orders – Adjustments to prevent scrolling when record is in edit mode.

Parts / Receiving – Adjustments to prevent scrolling when record is in edit mode.

ExpressRequest – Adjustments to prevent scrolling when record is in edit mode.

#### **Release 9.3.8.7 Revisions**

Parts Receiving – Corrected issue of program not prompting to update part current cost if changed.

ExpressRequest – Corrected issue of wrong unit being selected when units have the same name.

### **Release 9.3.8.5 Revisions**

Performance – Changed the Query Cursor Type to 'Automatic' under Admin / Configuration / Performance Settings to provide best possible performance of queries.

Equipment / Units – Improved performance when creating a work order from the Units screen.

Report Builder – Corrected issue of error when attempting to save a report to a new name.

General – Added ExpressMaintenance.ini file information to File / View Connection Info.

General – Miscellaneous cleanup and adjustments.

### **Release 9.3.7.3 Revisions**

General – Corrected issue of reports duplicating notes from previous record rather than refreshing notes field.

General – No database changes.

Maintenance / Reports – Added search criteria for Service Technician to pass wot WoServices query for employee assignment in services detail section.

Maintenance / Units – Corrected issue of Attachment Reference field being limited to 80 characters rather than 250.

### **Release 9.3.6.1 Revisions**

Admin – Added option under work orders to setup user fields 1-3 for parts section of work orders.

Work Orders – Parts section now has separate (from services) setup for user fields 1-3 column headings.

Work Orders – Corrected issue of user fields 1-3 only allowing 1 character when no lookup lists exists.

General – Corrected URL links for help and release notes at website.

### **Release 9.3.5.1 Revisions**

General – Adjusted notes editor to allow for drag & drop of images into notes.

General – Updated all date fields that contain 0 to be null value to prevent display of 12/30/1899.

General – Updated help and support links to use proper URLs.

Admin / SQL Statements – Inserted scripts to correct Search Tag fields if user has issues with these fields.

Equipment – Adjusted ‘Model’ and ‘Criticality’ fields to allow for manual entry in addition to pick list selection.

Equipment – Adjusted fields under Device tab to allow for manual entry in addition to pick list selection.

Equipment – Corrected issue of error when certain conditions exist when duplicating a unit.

Parts – Adjusted ‘Criticality’ field to allow for manual entry in addition to pick list selection.

Work Orders – Corrected issue of setting a service to Canceled did not set the service under the unit back to ‘Normal’ from ‘Assigned’.

Work Orders – Corrected error when flagging for print on work orders after a search by employee.

Work Orders – Corrected issue of not being able to switch a completed service back to incomplete.

Work Orders – Added options to reset service / part to In-Complete for selected record or all.

#### **Release 9.3.4.1 Revisions**

General – Improved Rich Text Notes Editor with spell checking, tables and other improvements.

General – Added button to spell check notes fields in Units, Parts, Requests, Rolodex, etc.

General – Adjusted search button so that Grid Find Panel does not appear if grid does not contain any records.

Admin / Services – Corrected issue of Labor hour estimate field appearing as currency.

Admin / Reports Management – Added option to reset reports to a status of not converted to allow for conversion of reports from version 8 to 9 after importing version 8 reports.

Rolodex – Corrected issue of other users not being able to see ‘Community’ records.

Requests – Added Clear button in search panel to clear / refresh search settings..

Work Orders – Adjusted Reference field to allow for data entry in addition to pick list.

Work Orders / Parts Details – Added fields for selecting part by number and name rather than using a single field for both methods.

Work Orders – Corrected issue of Parts Import utility not working properly for importing parts consumption.

#### **Release 9.3.3.3 Revisions**

Work Orders – Removed debugging message appearing upon insert of work order that reflects a ‘0’ in a message box.

### **Release 9.3.3.2 Revisions**

General – Improved cursor focus to first field on all screens when user clicks Insert (+) button.

Purchase Orders – Adjusted to use previously used date when user is Inserting new records from past date.

Parts Receiving – Adjusted to use previously used date when user is Inserting new records from past date.

### **Release 9.3.3.1 Revisions**

General – Misc. adjustment of various grid column alignments.

General – Added code to adjust SearchTags to proper field type for databases with wrong type.

Maintenance / Work Orders – Corrected error when inserting a new work order if not administrator and service is required.

### **Release 9.3.2.1 Revisions**

Maintenance / Requests – Program changed so that users can Select multiple requests for creating work orders.

ExpressRequest – New release assigns value to Selected field for processing by maintenance.

### **Release 9.3.1.3 Revisions**

General – Improved handling of export and attachments folder for using My Documents when folder is invalid.

Administration / Configuration / Data Settings – Added option to enter “\$Documents” to direct program to use local Documents folder for Exports, Attachments and Forms.

Maintenance / Work Orders – Corrected issue of Complete button not functioning fully when the work order is in Insert mode and the Complete button is clicked.

Maintenance / Units – Added Parts Category (display only) to Parts grid under Parts tab.

### **Release 9.3.1.1 Revisions**

General – Misc. adjustments to Administration / Backup & Restore database options.

### **Release 9.3.9.6 Revisions**

Equipment – Corrected issue of email list saving but not displaying for individual units of equipment.

Parts Reports – Corrected issue of ‘criticality’ and ‘status’ selections not passing to report search criteria.

ExpressRequest – Corrected error on login when only one record was found.

ExpressRequest – Corrected error when selecting to view the email list for a request.

ExpressRequest – Adjusted so that Unit Number is displayed rather than Unit Record Number.

### **Release 9.2.9.3 Revisions**

General – Adjusted update to handle situations where users have database type mismatch in database structure where numbers are not of float type.

Update automatically converts to numeric with precision of 5.

General – Improved handling of notes editor when user clicks on another form or area of program while editing notes.

General – Improved error response when program fails to connect to the SQL Server / Database.

### **Release 9.2.8.1 Revisions**

General – Added support for languages that read right to left in notes fields and Standard notes editor (not supported in enhanced notes editor).

Admin / Configuration / Data Settings – Added option to define language read direction (left to right / right to left).

ExpressRequest – Added support for language read direction in Standard notes editor.

Purchase Orders – Adjusted code to apply / un-apply Date Closed when PO is marked as closed / open.

Purchase Orders – Changed Date Closed field to allow manual override / edit by user.

Purchase Orders Closing – Adjusted code to apply / un-apply Date Closed when PO is marked as closed / open.

### **Release 9.2.7.2 Revisions**

Parts Receiving – Corrected issue of total being doubled on post of receiving record.

Work Orders Overview – Adjusted to allow edit of Work Order Class field in overview grid.

Parts Analysis – Adjusted to accommodate different date formats in search criteria

ExpressRequest – Adjusted to accommodate the new option to use Standard or Enhanced (default) editor.

### **Release 9.2.7.1 Revisions**

General – Misc. cleanup in various areas of program.

Admin / Configuration / Data Settings – Added option for 'Notes Editor Style', Standard or Enhanced (default) for situations where users should not add advanced notes and for use with Arabic languages reading from right to left which is not supported by the enhanced editor.

Work Orders – Adjusted parts detail section so that Taxable setting from the part when it is selected.

Purchase Orders – Adjusted so that if a unit is selected in upper section, it is automatically inserted in detail section if not other unit is selected.



Notes Utility – Adjusted code for better operation and more accurate reporting of oversized notes.

### **Release 9.2.6.7 Revisions**

General – Adjusted search panels to only use Enter press if the cursor is in the search panel.

General – Added code to prevent deleting records from overview grids.

General – Misc. cleanup and adjustments in various areas of program.

Scheduler – Increased event / appointment notes from 60 characters to 255.

Requests – Adjusted to lookup unit by name or number to verify if a valid unit is selected.

Requests – Minor adjustments to improve performance and ensure notes are reflected in grid.

ExpressRequest – Adjusted to get and save the unit name and number when a unit is selected.

### **Release 9.2.6.1 Revisions**

General – Added 3 user definable text / lookup fields to Purchase Order Details, Work Order Services, Work Order Parts and Equipment Services grids with caption / headings definable in Admin / Configuration under applicable sections. To enable the new columns in the grids, right click in grid and select 'Reset Grid Layout.'

General – Added 3 user definable checkbox fields to Purchase Order Details, Work Order Services, Work Order Parts and Equipment Services grids with caption / headings definable in Admin / Configuration under applicable sections. To enable the new checkbox columns in the grids, right click in grid and select 'Reset Grid Layout.'

General – New revisions to Notes Editor allows for faster and improved cursor movement in tables when using arrow keys.

General – Removed SQL Statements from Utility section and moved to Administration section for better security.

Reporting – Implemented new release of Report Builder version 18.

Admin / Reports – Added option to popup menu to 'Convert Report to New Version' for users importing older reports.

Admin / Configuration / Scheduling – Added option to turn on 'Highlight Past Due Services and Work Orders (Red)' to indicate if scheduled date should be in red if past due when viewing scheduled services.

Purchase Orders – Adjusted to auto populate the Site field when a Unit is selected for the PO.

Purchase Orders – Added Payment Terms field which is auto populated when selecting Vendor but can be edited or selected separately.

Purchase Orders – Corrected error issue when searching by Part Number or Part Name in search panel.

Purchase Orders – Adjusted to not assume and populate unit in detail section from header section.

Purchase Orders – Added Jump to Part Record option in PO detail section and popup menu.

Purchase Orders – Set popup menu in Vendor Ref field to be standard windows copy / paste popup menu.

Purchase Orders – Adjusted Requested By and Ship Via fields to allow manual entry in addition to selection list.

Parts Receiving – Adjusted to display a running total as details entries are posted rather than waiting until post of entire record.

Parts Receiving – Adjusted to allow Enter key in PO Number field to function as clicking button to the right of the field.

Parts Receiving – Added feature to PO Number field to warn user if PO being selected is already marked closed.

Service Overview – Added code to display scheduled date in red if service is past due and option is turned on in Admin / Configuration / Scheduling.

Service Overview – Now includes the 3 user definable text fields and 3 user definable check box fields.

Work Orders Overview – Added code to display scheduled date in red if work order is past due and option is turned on in Admin / Configuration / Scheduling..

Work Orders – Changed Quantity column heading to Hours.

### **Release 9.2.5.5 Revisions**

General – Published new [Version 9 – Searching](#) document to explain how grids, searching and other features work in version 9.

General – Corrected issue of arrows not scrolling properly in notes editor containing a large table.

Companies – Corrected issue of grid header menu not appearing on right-click.

Parts Analysis – Corrected error when viewing detail receiving records for a given part.

Reporting – Corrected issue of export data only to Excel causing error where Excel cannot open the file.

Reporting – Implemented new release of Report Builder version 18.

Units – Corrected issue of Last and Next Calibration fields not showing data or saving data entered.

### **Release 9.2.5.3 Revisions**

General – Published new [Version 9 – Searching](#) document to explain how grids, searching and other features work in version 9.

General – Adjusted the Work Order services view to include the Check1 and Check2 field from Servitem table.

Service Overview – Corrected issue of error when creating work order from Service Overview screen.

Purchase Orders – Corrected error received when duplicating a PO.

Purchase Orders – Corrected issue of Approver name not being populated when PO is approved.

Requests – Adjust code to prevent error in certain conditions when selecting a request record.

### **Release 9.2.5.1 Revisions**

General – Corrected issue in Report Builder where AutoDetect was failing to recognize certain types of pictures from Units and Parts.

Purchase Orders – Enhanced search options and auto tab set based on search results.

Parts Receiving – Enhanced search options and auto tab set based on search results.

Parts Receiving – Added a field for Comments on each record.

### **Release 9.2.4.6 Revisions**

Purchase Orders – Added Notes field to the Overview grid to enable Filtering and Finding using the Notes content.

Purchase Orders – Corrected issue of search not functioning when searching by Part Name.

Purchase Orders – Adjusted so that Find panel is visible along with the Search panel when the Search button is clicked.

Purchase Order Closing – Added Search button to make the Find panel visible or hidden as in other screens.

Parts Receiving – Adjusted so that Find panel is visible along with the Search panel when the Search button is clicked.

Parts Analysis – Adjusted so that Find panel is visible along with the Search panel when the Search button is clicked.

Parts Re-Ordering – Adjusted so that Find panel is visible along with the Search panel when the Search button is clicked.

Parts Receiving – Adjusted so that Find panel is visible along with the Search panel when the Search button is clicked.

Requests – Adjusted so that Find panel is visible along with the Search panel when the Search button is clicked.

Units – Added button at the top of screen to create a work order for the currently selected unit.

Units / Services (PMs) – Added a button to jump to Service Overview and see services due for that unit.

Units / Work Order History – Added a button to jump to Work Order Overview and see open work orders for that unit.

Units / Service History – Added a button to jump to Work Order Overview and see open work orders for that unit.

### **Release 9.2.4.4 Revisions**

Administration / Configuration / PO Email Settings – Corrected issue of the PO body text not being editable.

Administration / Configuration / ExpressRequest – Corrected issue of not being able to edit default ExpressRequest notes.

Purchase Orders – Corrected issue of login not being populated when Approved check box is checked by the approving user.

Parts Inventory – Adjusted popup menu on vendor number and manufacturer number fields to allow copy / paste.

Parts Inventory – Corrected error on inserting a new record into Parts / Attachments.

Work Orders – Corrected issue of Employee assignment not working when user has only self level access to insert / edit work order.

ExpressRequest – New release corrects inability to save user's preference for Units lookup list columns.

### **Release 9.2.4.1 Revisions**

General – Corrected permission error when user tries to select from drop down list of codes. The error would fire if the user was selecting a code but did not have to write permission to codes setup.

General – Created new Signatures table for future feature to allow for digital signatures on work orders and purchase orders.

Admin / Employees -Added new check box field to indicate if user is to check for updates each time they run the program. To be used by administrator so the program will alert of any new updates being available.

Admin / Configuration – Added option under Work Orders / General Settings to lock work orders after completion.

Work Orders – Added code to check configuration settings and if work orders are to be locked after completion, then only a 'Full Administrator can edit a completed work order.

Work Orders Overview – Adjusted so that if search is performed in Overview tab and only a single record is found, the screen automatically switches to the Data View tab for viewing / editing of the record.

### **Release 9.2.3.9 Revisions**

General – Adjusted to recognize user's Windows and domain account when using Windows login for ExpressMaintenance login.

General – Adjusted lookup lists to make the sort case insensitive.

Requests – Corrected issue of not being able to edit Unit in a request.

Parts Ordering – Corrected error message when creating a PO from the ordering screen.

### **Release 9.2.3.8 Revisions**

General – Corrected odd scrolling behavior in certain grid cells with lookup lists.

Admin / Employees – Corrected error in accessing employee records when user is limited to a site.

Parts – Added last work order date and number to the Analysis tab for extra information.

Parts / Reports – Corrected issue of parts reports passing shelf even when no shelf value has been entered.

### **Release 9.2.3.6 Revisions**

General – Adjusted Site / Location selection dialog to automatically position to the values that were previously selected.

Utilities / App Preferences – Added option to 'Use Tabbed Maximized Windows' for user who like to have all main forms maximized and tabbed headings.

Admin / Employees – Corrected issue of employee list being limited to site even when the user is logged in as full administrator.

Admin / Employees – Adjusted program to always make login of 'sa' a full administrator.

Work Orders – Corrected issue when editing services or parts before work order was in edit mode, caused initial change to be cancelled.

Work Orders – Adjusted to use employee labor rate when available and if not available, use labor rate as setup under Admin / Configuration / Work Orders / Charges & Auto Apply / Labor Rate.

### **Release 9.2.3.5 Revisions**

General – Added option to pass different types of SQL Server Driver connectivity by adding a line in the ExpressMaintenance.ini file. Valid options include MSSQL, MSSQL-Native, MSSQL-ODBC, MSSQL-Client. Example driver specification line 'SQLDriver=MSSQL-ODBC'. If no driver is passed, 'MSSQL' is used. This option was added to accommodate users running older versions of MS SQL and Windows.

Admin / Employees – Enabled option to Inherit / Apply access settings, grid settings and lookup list settings from one user to multiple users.

Admin / Employees – Added code to refresh a users access settings if they are altered by that user to prevent requiring them to logout and back in to activate them.

Work Orders – Adjusted to allow for Parts selection when part descriptions are identical among multiple parts.

Work Orders – Corrected issue of employee labor rate not populating when employee is selected.

### **Release 9.2.3.3 Revisions**

Units / Overview – Adjusted to allow for single-click to flag record or double-click any other field to select record and switch to Data tab.

Parts / Overview – Adjusted to allow for single-click to flag record or double-click any other field to select record and switch to Data tab.

Work Orders / Overview – Adjusted to allow for single-click to flag record or double-click any other field to select record and switch to Data tab.

### **Release 9.2.3.2 Revisions**

General – Improvements in database connection settings to allow for more concurrent queries at one time to help with slower computers with slower processors.

General – Added close / exit buttons to all screens and all tabs on the main ribbon toolbar.

General – Adjustments in database connection settings to allow deal with intermittent data loss on post in work orders and issues.

General – Adjusted to make sure exports and attachments go to the folder specified in Admin / Defaults / Data Settings. If no folder is specified the program attempts to use the user's Documents folder.

General – Corrected issue causing report to intermittently fail due to new connection settings for optimized performance.

Purchase Orders – Added option to input and search by PO number in addition to being able to locate via Find option.

Parts Receiving – Adjusted to attempt to save changes if the user clicks the refresh button while the record is in edit or insert mode.

Purchase Orders – Adjusted to attempt to save changes if the user clicks the refresh button while the record is in edit or insert mode..

Service Overview – Adjusted to only create work orders for picked services that match the current query in the Service Overview screen rather than all picked services. Only picked reflected in the query at the time the 'Create Work Orders' button is clicked will be processed.

Work Orders – Corrected issue of options to limit services and parts lookup lists by category or unit not working.

Work Orders – Corrected issue of not being able to select the employee in the services detail section.

Work Orders – Corrected issue of services in past work orders not appearing in the display. The data was there but not displaying correctly.

Work Orders – Corrected issue of extra confirmation dialog appearing when selecting to mark work order as completed.

Work Orders – Adjusted to attempt to save changes if the user clicks the refresh button while the record is in edit or insert mode.

Work Orders – Adjusted services section to display the service even if the service is no longer active or has been deleted.

Work Orders – Adjusted parts section to display the part description even if the part is inactive or has been deleted.

### **Release 9.2.2.3 Revisions**

General – Misc. cleanup in various screens and drop downs.

Utilities / SQL Statements – Corrected issue of SQL Statement syntax not showing up in overview or data tab.

Employees – Change display of Labor Cost and Labor Rate fields to show currency format.

Equipment (Units) – Adjusted to include work order notes in History and Work Order tabs.

Requests – Corrected issue of query not working properly for certain foreign date / time formats.

Work Orders – Corrected issue of work order notes not saving to text version of notes field.

Work Orders – Corrected issue of parts not selecting correctly where part numbers are different but descriptions are identical.

Work Orders – Corrected issue of labor rate not being populated when employee is selected in the Services section.

### **Release 9.2.2.1 Revisions**

General – Additional performance adjustments to accommodate users running with Citrix and wide area access.

General – Added alternating grid color for users not using application themes.

General – Removed less desirable themes from selection list for improved appearance.

General – Corrected issue of parts info not populating when selecting from a pick list sorted by part number rather than name.

General – Corrected issue of units info not populating when selecting from a pick list sorted by unit number rather than name.

Parts – Corrected issue of Picture not being displayed or updated.

Units – Corrected issue of notes not displaying in Services tab.

Requests – Adjusted query parameters to accommodate foreign date / time formats.

Service Overview – Corrected issue of notes not being visible in overview.

Work Orders Overview – Added the ability to edit work order notes from the overview.

Work Orders -Corrected issue of users not being able to edit work orders with certain access settings.

Work Orders – Corrected issue of notes not being visible in the Services section.

ExpressRequest – New version available with several improvements and adjustments.

ExpressRequest – Adjusted to check the ‘Use Themes’ setting from ExpressMaintenance configuration.

### **Release 9.2.1.1 Revisions**

Note: Users running the program via Citrix, Terminal Services or a remote wide area network should not use the themes feature for performance purposes. To disable the themes feature, go to Utilities / App Preferences and un-check the 'Use Themes' option .

General – Added options to allow / not allow the use of themes.

General – Several misc. adjustments to improve performance opening screens, etc.

General – Added option to clear notes in all notes fields throughout.

General / Reporting – Adjusted to use folder settings from Admin / Config / Data Settings when exporting and emailing.

General – Added right click option to all grids to Reset Grid Layout.

Admin / Configuration / Work Orders – Corrected issue of requiring scheduled date not functioning properly.

Admin/ Configuration / Performance Settings – Added option to allow or not allow the use of themes.

Units – Adjusted downtime wizard for clarification of setting unit down or up.

Units – Corrected issue of checking include In-Active units in search not working.

Parts – Corrected issue of checking include In-Active parts in search not working.

Requests – Corrected issue of work order assignment not being added to request notes.

Service Overview – Improved performance of flagging services for work order creation.

Work Orders – Corrected issue of Source selection not working in search panel.

Work Orders – Corrected issue of notes field error in work order screen if notes was a required field.

Work Orders – Corrected issue of admin users not being able to delete a work order record.

Work Orders – Made improvements to permission checking in work orders.

Work Orders – Adjusted so that a new search of work orders will un-flag all work orders.

Work Orders – Improved performance of flagging work orders for printing.

Work Orders – Adjusted to include text version of notes in Overview page.

### **Release 9.1.8.1 Revisions**

General – Increased default timeout connection to the database to 15 seconds to allow for remote connectivity where connection might be slower than local networks.

Administration / Scheduling – Added options to set default days back and forward for initial work order query in Work Order Overview screen.



Work Order Overview – Changed so that initial search setting is based on Scheduled (non-completed) work orders and date range as setup under Admin / Scheduling.

Work Orders – Corrected issue of Jump to Unit not finding the unit record.

### **Release 9.1.7.1 Revisions**

General – Corrected calculation process when checking size of notes fields.

Administration / Configuration / Security Settings – Added option to make login entry case sensitive or insensitive.

Administration / Employees – Added Login to list of available fields in overview grid.

Equipment (Units) – Added display of Record Number field to data screen.

Parts – Added display of Record Number field to data screen.

Requests – Corrected issue of notes not updating after a search / filter to single record.

Requests – Corrected notes error when assigning a request to a work order.

Work Orders – Added display of part number in parts section of work order details.

Notes Utility – Misc changes and improvements in the processing and options.

### **Release 9.1.6.3 Revisions**

General – Added option to 'Export Grid Data' to all grid right-click popup menus.

General – Added option 'Reset Grid Layout' to all grid right-click popup menus.

General – Added saving of Search Panel status on exit of form with search panels (example: Work Order Overview) so when form is closed and then re-opened, it returns to previous state (visible / non-visible).

Application Preferences – Added option to use tabbed maximized forms.

General – Corrected issue of program allowing user 'sa' to login without a password.

General – Corrected issue of initial login as 'sa' not allowing access to Admin / Employees for setting up access setting for 'sa' and other users.

General – Corrected issue of Notes field 'Check Size' not reporting accurate size.

General – Corrected issue of email sending automatically requesting a return receipt even when option is unchecked.

General – Corrected issue of random 'Argument Out of Range' error when selecting from pick lists.

Admin / Configuration – Added option to set Max Notes and Max Pictures sizes to 0 for unlimited size. This change is to accommodate existing large notes but this setting is not recommended.

Equipment (Units) – Corrected issue of Work Orders tab not populating when selected.

Equipment / Services (PMs) – Adjusted service parts detail to show part number and other parts data when viewing in grid display.

Parts / Receiving – Corrected issue of program not prompting to change the current cost of part.

Maintenance / Reports – Corrected issue of date range passing incorrect time thereby not including records matching the beginning date.

Work Orders Overview / Service Overview / Calendar View – Corrected issue of print options only being enabled the first time the calendar / scheduler form was displayed.

Work Orders Overview -Enabled ability to double-click to switch to Data tab as in other forms. The exception is if the user double-clicks in an editable cell (Flag, Employee, Scheduled Date, Priority).

Work Orders Overview – Added ability to view work order notes in overview grid.

Work Orders – Adjusted auto completion of services and parts to use the work order completion date rather than current system date.

Service Overview – Enabled ability to double-click to flag a service for work order creation. The exception is if the user double-clicks in an editable cell.

Purchase Orders – Corrected issue of unit information not populating after a unit is selected.

ExpressRequest – Corrected issue of emails not being sent when Request is created.

### **Release 9.1.6.1 Revisions**

General – Adjusted all check box components to show unchecked when null.

General – Adjusted all grids to exclude notes fields for improved performance including Units, Parts & Work Orders.

General – Adjusted all grids to apply filter values without requiring pressing Enter or exiting the cell.

General – Adjust lookup combo components to show the sort order when selected.

Employees / Access Settings / View Activity Log – Added option to print login / logout activity report.

Equipment (Units) – Corrected issue of user fields requiring select from list and not allowing edit.

Equipment (Units) – Corrected issue of user fields not limiting selection list to applicable codes.

Equipment (Units) – Corrected issue of duplicating unit failing.

Parts – Corrected issue of user fields requiring select from list and not allowing edit.

Parts – Corrected issue of user fields not limiting selection list to applicable codes.

Parts – Corrected issue of duplicating part failing.  
Purchase Orders – Added ability to search by Part Name and Number.  
Purchase Orders – Adjusted to allow for up to 4 digits beyond decimal in pricing fields.  
Purchase Orders – Corrected issue of authorized users not being able to approve POs.  
Purchase Orders – Corrected issue of duplicating including receiving data.  
Work Orders – Corrected issue of not being able to flag all work orders for printing when date range was used for searching.

### **Release 9.1.5 Revisions**

General – Added Search button in all screens to access the Filtering option from Data tab.

General – Adjusted all grids to apply filter values without requiring pressing Enter or exiting the cell.

General – Created new Emails table and setup fields for future implementation of Express Email Server.

Purchase Orders – Corrected permission issue when creating new record.

Service Overview – Misc corrections in report of services due by Unit.

Work Orders – Corrected issue of general and safety notes being reversed when created from a Request.

Notes Utility – Adjusted to report additional information about the record rather than just record number.

### **Release 9.1.4 Revisions**

General – Altered filter column default to 'contains' operator rather than '=' in logical places such as Parts Description and Units Name to make quick searching easier.

General – Adjusted date based queries to accommodate international date formats.

Maintenance / Work Orders – Added ability to search by Unit Name and Number in search panel.

Maintenance / Work Orders – Added 3 user definable fields to the Services grid.

Maintenance / Work Orders – Corrected issue of Print button not functioning in the print interface.

Admin / Configuration / Work Orders / General Settings – Added options to define the column captions for the 3 user fields in Work Order Services grid.

Purchase Orders – Corrected issue of permissions not allowing edit / insert of record.

### **Release 9.1.3 Revisions**

General – Updated notes fields to convert bitmaps to png for smaller content saving in the database fields.

General – Adjusted Notes Utility program to convert bitmaps to png for smaller content saving in the database fields.

General – Misc. cleanup of buttons, popup menus and field components in various screens as needed.

Admin / Configuration / Data Settings – Added option to set default folder for exporting reports and data.

Admin / Configuration / Scheduling Settings – Added option to indicate if editing is allowed in the Work Order Overview screen. If editing is allowed, only the Flagged, Scheduled Date, Employee and Priority fields are editable from the overview screen.

Admin / Codes – Adjusted printing to allow print of a single code type or all codes.

Service Overview – Corrected issue of report not including count based PMs in report.

Service Overview – Corrected issue of work orders not using the PM scheduled date when scheduled date was blank in creation screen.

Utilities / SQL Statements – Adjusted to disable the 'Execute SQL' button when the Overview tab is the active page. Users must go to the Data tab and view the full SQL statement before executing it.

### **Introducing Version 9 of ExpressMaintenance – What's New**

#### **General**

Implemented new ribbon menu component system to better handle different resolution monitors and settings.

Redesigned main ribbon menu for better organization and efficiency.

Implemented new grids used in all data screens for overview of records, searching, filtering, sorting, grouping and locating records instantly.

New advanced edit, date, checkbox and combo box components in all data screens.

Improved web help system updated to reflect new version changes.

Updated version of built-in report builder with several enhancements.

New theme selection option allows users to select the overall program appearance.

New rich edit (editor) interface for editing notes and instructions.

New scheduler screen for viewing PMs and Work Orders in calendar layout.  
New Search button in several screens allow for opening / closing the search panel thereby allowing for more room for grid view of records.  
New manner of handling users, technicians and requester all under the Employee screen rather than three separate locations.  
Optional feature to allow specification in ini file of MS SQL Driver type to use for connection to MS SQL Server.

## **Administration**

Defaults screen replace with better organized Configuration screen.  
Configuration – Added new category of settings for Security Settings.  
Configuration – Added new category of settings for Mobile APP Interface.  
Configuration – Added new category of settings for Scheduling.  
Configuration – Added various new settings under existing categories.  
Configuration / Security Settings – New options for password requirements.  
Employees – Completely redesigned employee screen with improved interface.  
Employees – Combined users, technicians and requesters into a single screen setup.  
Employees – Completely new method of setting up user access permissions.  
Employees – Several new fields for additional pertinent data.

## **Maintenance**

General – Improved screen layout, interface options, searching, filtering, sorting and grouping.  
Reports – Added addition filtering options and new version of Report Builder.  
Units – New Attachments page tab with added options for unit attachments.  
Units – Separate page tabs for Notes and Safety Notes.  
Units / Services – Improved notes editor for notes and instructions.  
Units / Services – Redesigned schedule wizard for defining how services renew.  
Units / Downtime – Redesigned downtime wizard for logging downtime / lockout records.  
Work Orders – Enhanced search options for advance searching for work orders.  
Work Orders – Search button to open and close search panel for additional room on screen.  
Work Orders – Added new Calendar button to view work orders in various calendar views.  
Service Overview – Enhanced search options for advance searching for work orders.  
Service Overview – Search button to open and close search panel for additional room on screen.

Service Overview – Added new Calendar button to view work orders in various calendar views.

Parts – Improved notes editor for notes and instructions.

Parts – New options for additional types of attachments.

Parts Inventory Analysis – Added live separator bar for expanding / contracting panels to view more or less details data.

Parts Re-Ordering – Added live separator bar for expanding / contracting panels to view more or less detail data.

## **Utilities**

Rolodex – Added option to make rolodex records community or personal.

Schedule – Added option to create and track personal and community appointments and events.

Maintenance Forms – Added option to create and save maintenance forms using the built-in editor.

Application Preferences – Added option to select application theme based on new theme library.

Change Password – Altered password screen to display and require new password requirements as setup under Administration / Configuration / Security Settings.